

# MOLYKOTE® D-6600 Anti-Friction Coating

Durable coating with a low coefficient of friction and good adhesion to metal



## Reliable coating for clean, long-lasting lubrication

Consumers demand durable, long-lasting cars. Expectations for extended durability aren't lessened for high-stress components such as starter motors. Developed from proven *Smart Lubrication™* solutions, MOLYKOTE® D-6600 Anti-Friction Coating delivers long-lasting performance that meets Tier 1 specifications while using standard equipment for spray-coating or dip-spinning processes.

metal/metal and metal/plastic material pairings involving slow to medium-fast movements and medium- to low-pressure conditions. It can be used wherever oils or greases cannot be used for technical reasons or are undesirable because of the risk of soiling.

MOLYKOTE® D-6600 Anti-Friction Coating has been proven in cycle-testing of starter motors and has many potential applications for metal parts such as door locks and metal/plastic contacts such as ball joints and window lifters.

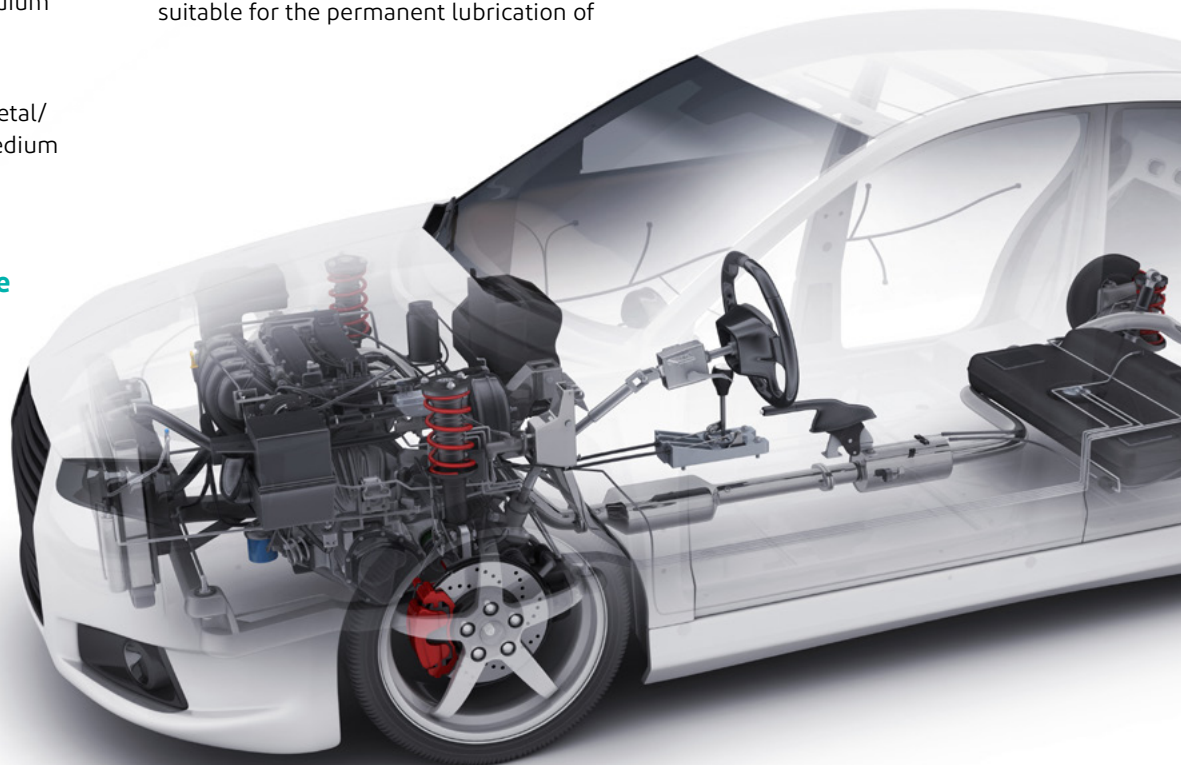
## Performance advantages

- Excellent dry-lubrication properties
- Excellent adhesion to metals
- Excellent load-carrying capacity and low coefficient of friction at medium and low pressures
- Excellent wear protection
- Low coefficient of friction for metal/plastic pairings, especially at medium and low pressures
- Good corrosion protection

## For challenging automotive applications

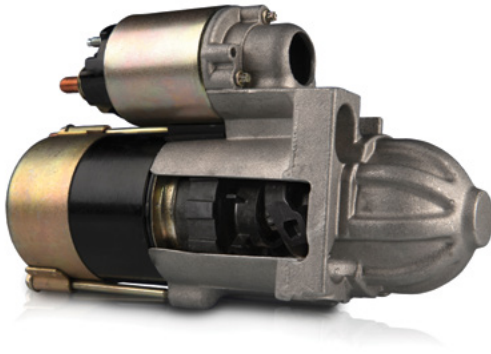
- Starter motor lubrication

MOLYKOTE® D-6600 Anti-Friction Coating is a very durable coating with a low coefficient of friction and good adhesion to metal. This dry-film lubricant is suitable for the permanent lubrication of



## Typical properties

Specification writers: These values are not intended for use in preparing specifications. Please contact your local MOLYKOTE® sales representative prior to writing specifications on this product.



| Standard <sup>(1)</sup>                                      | Property   | MOLYKOTE® D-6600<br>Anti-Friction Coating |
|--|--|---|
|  | Color (cured dry film)   | Yellowish                                 |
|  | Service temperature range (cured film)   | -40 to +260°C                             |
| <b>Physical properties</b>                                   |  |   |
| DIN EN ISO 2431  | Viscosity, cup # 4 at 23°C (73°F)  | 32 s                                      |
| ASTM D1475   | Density at 23°C (73°F)   | 0.93 g/ml                                 |
| ASTM D56   | Flash point  | 26°C (79°F)                               |
| <b>Load-carrying capacity, wear protection, service life</b> |  |   |
| DIN 51834  | SRV, endurance life, cylinder (15*22 mm)/disc, load 45 N (100 N/mm <sup>2</sup> ), speed 0.32 m/s, 50°C, 40% RH, dry conditions <sup>(2)</sup>                   | s >10 h<br>COF (μ) = 0.17                 |
| DIN 51834  | SRV, endurance life, cylinder (11*15 mm)/disc, load 130 N (240 N/mm <sup>2</sup> ), speed 0.15 m/s, 23°C, 40% RH, dry conditions <sup>(2)</sup>                  | Mn > 48 h<br>COF (μ) = 0.15               |
| VDA 230-206  | Anti-noise tester, 2,500-cycle endurance test, steel vs. POM ball, load 30 N (120 N/mm <sup>2</sup> ), speed 2 mm/s, 23°C, 40% RH, dry conditions <sup>(2)</sup> | COF (μ) = 0.10, no noise                  |

<sup>(1)</sup>DIN: Deutsche Industrie Norm; ASTM: American Society for Testing and Materials; VDA: Verband der Automobilindustrie e.V.

<sup>(2)</sup>s = pretreatment sandblasted; COF = μ = coefficient of friction; Mn = manganese phosphate pretreatment; POM = polyoxymethylene; RH = relative humidity.

## About MOLYKOTE® Specialty Lubricants

For more than 70 years, customers around the world have trusted the MOLYKOTE® brand for performance and expertise to solve or prevent virtually any lubrication problem and to save energy. Available through a global network of more than 3,000 channel partners, MOLYKOTE® brand lubricants – which include well over 500 anti-friction coatings, compounds, dispersions, greases, oils and fluids, and pastes – serve the automotive market and industrial/maintenance, repair and overhaul (MRO) markets. To learn more about our extensive product and service offering or to locate a distributor, visit [molykote.com](http://molykote.com).



## Contact us

MOLYKOTE® has Contact Centers around the globe. Find the phone number for the center nearest you at [www.dupont.com/molykotecontact](http://www.dupont.com/molykotecontact).



DuPont™, the DuPont Oval Logo, and all trademarks and service marks denoted with ™, SM or ® are owned by affiliates of DuPont de Nemours, Inc. unless otherwise noted.  
© 2017-2022 DuPont.

The information set forth herein is furnished free of charge and is based on technical data that DuPont believes to be reliable and falls within the normal range of properties. It is intended for use by persons having technical skill, at their own discretion and risk. This data should not be used to establish specification limits nor used alone as the basis of design. Handling precaution information is given with the understanding that those using it will satisfy themselves that their particular conditions of use present no health or safety hazards. Since conditions of product use and disposal are outside our control, we make no warranties, express or implied, and assume no liability in connection with any use of this information. As with any product, evaluation under end use conditions prior to specification is essential. Nothing herein is to be taken as a license to operate or a recommendation to infringe on patents.